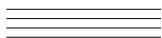


## B A L S A M



A L E X A N D R I A P E A R Y

This woods made by a stamp  
a stamp used throughout  
the same words over and over,  
gold bulbs and balsam,  
calligraphy from the holidays,  
woods used to make a stamp  
on that piece of air time-date stamped  
words used in a stamp

a 300- or 400-word count in/for the woods.

A woods made of stumps  
that prop up paintings in ornate frames  
the same image over and over:  
3 thick bright green lines,  
apple-green syllogism and evergreen haiku,  
every sixth painting by Neil Welliver  
of the woods *used to make a poem*

a 400-word decoy            in the woodsy  
art inside art.            When a poem appears  
inside another poem            every sixth image  
in a postage-stamp sized frame  
leaning against the line breaks  
is a cartoon of a laughing woman  
or a self-taught painting of a 6-point Doe  
as the wood duck escapes over a distant copper pond:

A few screw-on scents – No Trespassing,  
No Hunting  
No Snowmobiling – thrown in.